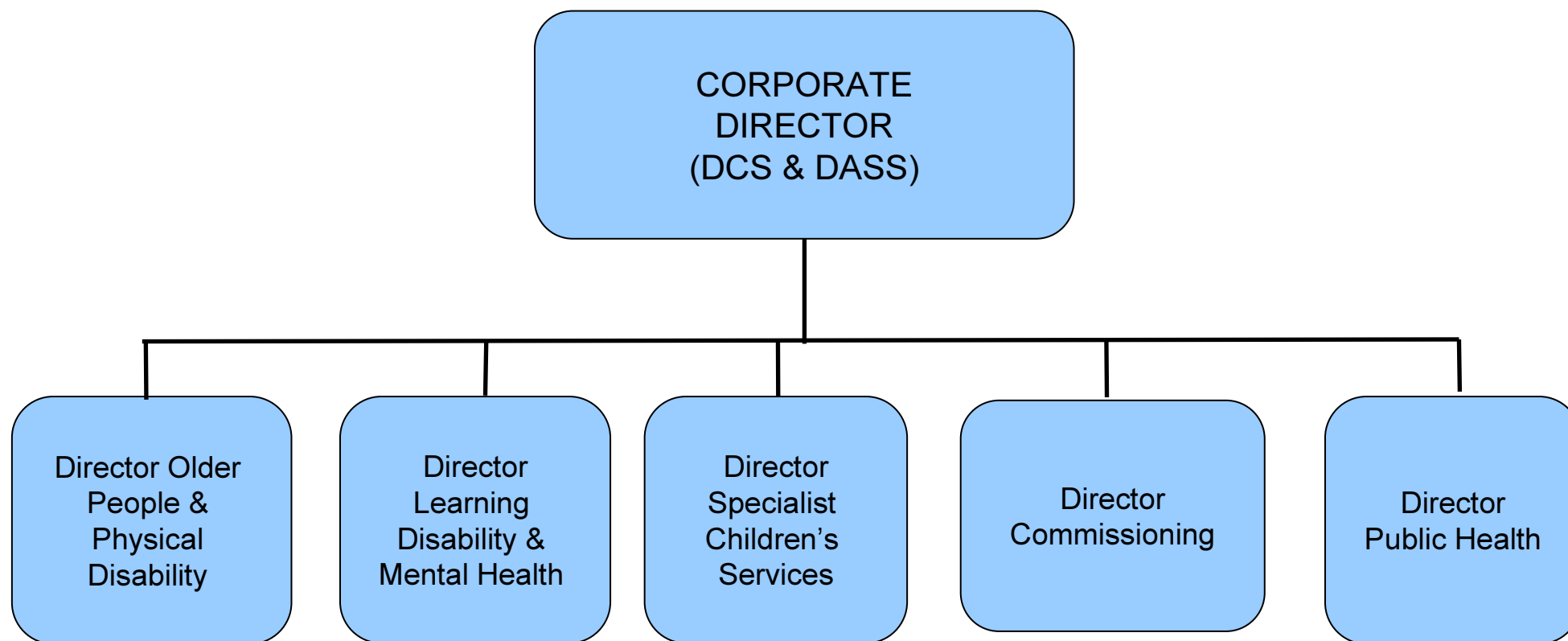


# SOCIAL CARE & PUBLIC HEALTH



|   |  |
|---|--|
| <b>Social Care &amp; Public Health</b>                  |  |
|   |  |
| <b>Director Older People &amp; Physical Disability</b>  | All current teams  |
|   |  |
| <b>Director Learning Disability &amp; Mental Health</b> | All current teams  |
|   |  |
| <b>Director Specialist Children's Services</b>          | <ul style="list-style-type: none"> <li>•Children and Young People teams (Children in Care)</li> <li>•Assessment and Intervention teams (split between statutory and prevention)</li> <li>•Family Support Teams (split between statutory and prevention)</li> <li>•Adolescent teams (split between statutory and prevention)</li> <li>•Adoption and Fostering</li> <li>•Disabled Children including residential respite provision</li> <li>•Asylum</li> <li>•CRU/OoH</li> </ul> |
|   |  |
| <b>Director Commissioning</b>                           | <p>All current teams from FSC<br/>Customer and Communities – Service Improvement</p> <ul style="list-style-type: none"> <li>•Commissioned Services</li> <li>•Commissioning and Development</li> <li>•LASAR (Local Area Single Assess and Referral)</li> <li>•KDAAT</li> </ul>  |
|   |  |
| <b>Director Public Health</b>                           | All current teams  |
|   |  |